

WORKFORCE
SOLUTIONS BORDERPLEX

2015 LABOR

MARKET YEAR IN REVIEW

REPORT INCLUDES

JANUARY 2016 DATA

borderplexjobs.com/regional-statistics

Message from the CEO

Workforce Solutions Borderplex is pleased to present the Labor Market Review for December 2015.

This issue examines how the workforce area performed during December 2015.

The information presented in this newsletter was gathered from federal and state sources and pertains to the El Paso MSA, the Workforce Solutions Borderplex region, and the City of El Paso.

Providing you access to the most recent and relevant labor statistics is our priority.

We will continue presenting this information on a monthly basis.

If there is additional information that you would like to see presented here, please send your comments and suggestions to me at joyce.wilson@borderplexjobs.com

Sincerely,

Joyce A. Wilson

Chief Executive Officer

Workforce Solutions Borderplex

Board of Directors:

Leo Duran Sr.
Board Chair
Private Sector

Mica Short
Board Secretary
Private Sector

Douglas Warnock
Board Vice-chair
Private Sector

Bertha A. Gallardo
Past Board Chair
Private Sector

Members:

Dr. Armando Aguirre
Public Education

Henry Gallardo
Private Sector

Robert Alcala
Vocational
Rehabilitation

Gary R. Hedrick
CBO

Michelle Aube-Barton
Literacy Council

Patricia Long
Public Education

Steve Blanco
Private Sector

Ross Moore
Organized Labor

Irma Bocanegra
Private Sector

Grace D. Munoz
Private Sector

Tracy Bristol
Private Sector

Lydia Nesbitt-Arronte
Economic Development

Andrea Chehede
CBO

Joseph Newkirk
Texas Workforce
Commission

Gerald Cichon
Public Assistance

William Serrata, PhD.
Adult Basic Education

Dr. Roberto Coronado
Private Sector

Elsa Stoerner
CBO

Yvette Delgado
Private Sector

Oscar Venegas
CBO

Fernando Escobedo
Private Sector

Hector Vidal
Private Sector

David Wilson
Private Sector

Equal Opportunity Employer/Program. Auxiliary aids and services are available upon request to individuals with disabilities. Relay Texas: 711 (Voice) or 1-800-735-2989 (TTY) Igualdad de oportunidades de Empleo/Programas. Equipo auxiliar y servicios de apoyo están disponibles para personas con discapacidad al ser requeridos. Relay Texas: 711 (Voz) o 1-800-735-2989 (TTY)

Joyce A. Wilson

Chief Executive Office

Unemployment Rates at a Glance

		December 2015				November 2015				December 2014			
		Labor Force	Employment	Unemployment	Rate	Labor Force	Employment	Unemployment	Rate	Labor Force	Employment	Unemployment	Rate
Texas	State	13,077,390	12,522,151	555,239	4.2	13,099,997	12,506,534	593,463	4.5	13,152,203	12,612,084	540,119	4.1
El Paso	MSA	341,414	324,915	16,499	4.8	341,836	324,011	17,825	5.2	346,011	327,831	18,180	5.3
Borderplex	WDA	350,343	333,284	17,059	4.9	350,755	332,369	18,386	5.2	355,361	336,640	18,721	5.3
Brewster	County	3,847	3,702	145	3.8	3,887	3,735	152	3.9	3,964	3,814	150	3.8
Culberson	County	980	941	39	4.0	976	931	45	4.6	1,021	983	38	3.7
El Paso	County	340,172	323,744	16,428	4.8	340,602	322,850	17,752	5.2	344,746	326,629	18,117	5.3
Hudspeth	County	1,242	1,171	71	5.7	1,234	1,161	73	5.9	1,265	1,202	63	5.0
Jeff Davis	County	1,069	1,033	36	3.4	1,053	1,015	38	3.6	1,113	1,076	37	3.3
Presidio	County	3,033	2,693	340	11.2	3,003	2,677	326	10.9	3,252	2,936	316	9.7
El Paso	City	284,150	271,703	12,447	4.4	284,457	270,953	13,504	4.7	288,097	274,124	13,973	4.9
Socorro	City	13,067	12,383	684	5.2	13,023	12,349	674	5.2	13,157	12,493	664	5.0

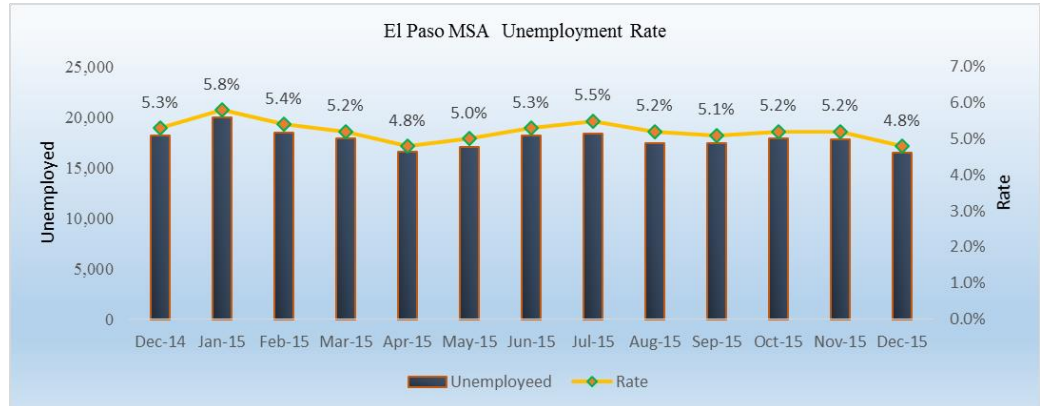
In December 2015, the El Paso Metropolitan Statistical Area (MSA) unemployment rate was 0.4 points higher than the unemployment rate for the city of El Paso.

The unemployment rate for the city of El Paso in December 2015 was at 4.4% which signified a 0.3 % decrease from the previous month. In addition, the unemployment rate for the city of El Paso decreased by 0.5 % since last year. The unemployment rate for the city of El Paso was higher than the unemployment rate for the state of Texas (4.2%); but lower than the National unemployment rate (4.8%).

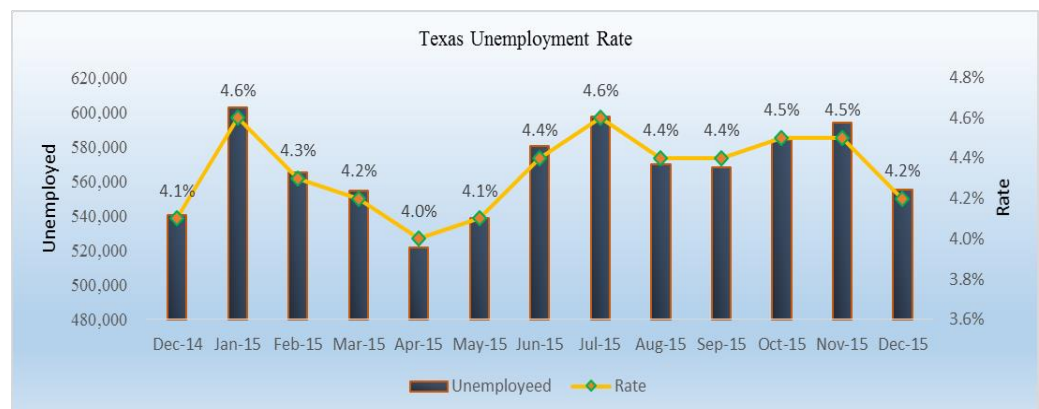
The unemployment rate for El Paso County in December 2015 was 4.8%, which was higher than the unemployment rate for the state of Texas (4.2%), but it was the same as United States (4.8%).

The El Paso (MSA) ranked 20th out of the 25 Texas MSAs in terms of unemployment rates.

El Paso MSA unemployment rate decreased by **0.5%** from last year. When comparing December 2015 with December 2014, there were **1,681** fewer people unemployed in el Paso MSA.



Texas unemployment rate increased by **0.1%** from last year. When comparing December 2015 with December 2014, there were **15,120** more people unemployed in Texas.



MSAs Ranked by Unemployment Rate for December 2015 (Not Seasonally Adjusted)

- Austin-Round Rock-San Marcos – 3.1%
- San Antonio-New Braunfels – 3.5%
- Houston-Sugar Land-Baytown – 4.6%
- Dallas-Fort Worth-Arlington – 3.7%
- Corpus Christi – 5.2%
- Brownsville-Harlingen – 6.9%
- McAllen-Edinburg-Mission – 7.8%

Employment by Sectors for El Paso MSA

Area Title NAICS Industry		Dec-15	Nov-15	Dec-14	Monthly Change	Monthly %	Yearly Change	Yearly %
El Paso	Total Nonfarm	303,500	302,900	298,400	600	0.2%	5100	1.7%
El Paso	Total Private	234,500	233,800	229,200	700	0.3%	5300	2.3%
El Paso	Goods Producing	30,200	30,100	29,600	100	0.3%	600	2.0%
El Paso	Mining, Logging, and Construction	12,900	12,900	12,500	0	0.0%	400	3.2%
El Paso	Manufacturing	17,300	17,200	17,100	100	0.6%	200	1.2%
El Paso	Service Providing	273,300	272,800	268,800	500	0.2%	4500	1.7%
El Paso	Private Service Providing	204,300	203,700	199,600	600	0.3%	4700	2.4%
El Paso	Trade, Transportation, and Utilities	66,300	65,800	66,200	500	0.8%	100	0.2%
El Paso	Wholesale Trade	11,100	11,000	11,100	100	0.9%	0	0.0%
El Paso	Retail Trade	40,600	40,300	40,800	300	0.7%	-200	-0.5%
El Paso	General Merchandise Stores	12,400	12,100	12,100	300	2.5%	300	2.5%
El Paso	Transportation, Warehousing, and Utilities	14,600	14,500	14,300	100	0.7%	300	2.1%
El Paso	Information	5,900	5,900	5,900	0	0.0%	0	0.0%
El Paso	Financial Activities	11,800	11,700	11,800	100	0.9%	0	0.0%
El Paso	Professional and Business Services	33,500	33,500	31,800	0	0.0%	1700	5.3%
El Paso	Administrative and Support and Waste Management and I	23,300	23,300	22,300	0	0.0%	1000	4.5%
El Paso	Employment Services	7,100	7,000	6,300	100	1.4%	800	12.7%
El Paso	Educational and Health Services	43,400	43,300	41,700	100	0.2%	1700	4.1%
El Paso	Leisure and Hospitality	33,700	33,700	32,600	0	0.0%	1100	3.4%
El Paso	Other Services	9,700	9,800	9,600	-100	-1.0%	100	1.0%
El Paso	Government	69,000	69,100	69,200	-100	-0.1%	-200	-0.3%
El Paso	Federal Government	12,800	12,700	12,800	100	0.8%	0	0.0%
El Paso	State Government	10,000	10,100	10,000	-100	-1.0%	0	0.0%
El Paso	Local Government	46,200	46,300	46,400	-100	-0.2%	-200	-0.4%

Super Sectors

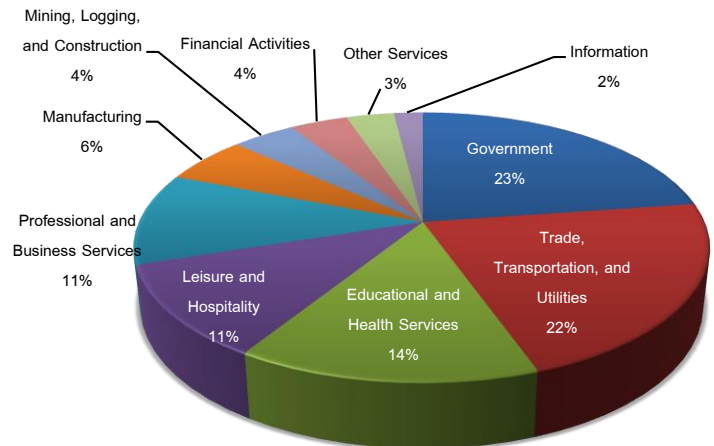
Total nonfarm employment for the El Paso MSA in December 2015 was 303,500. This reflected an increase of 0.2% since the previous month.

Note: The state of Texas nonfarm employment for the month of December 2015 indicated an increase of 0.2% since the previous month as well as an increase of 1.4% since last year.

Super Sector Distribution December 2015

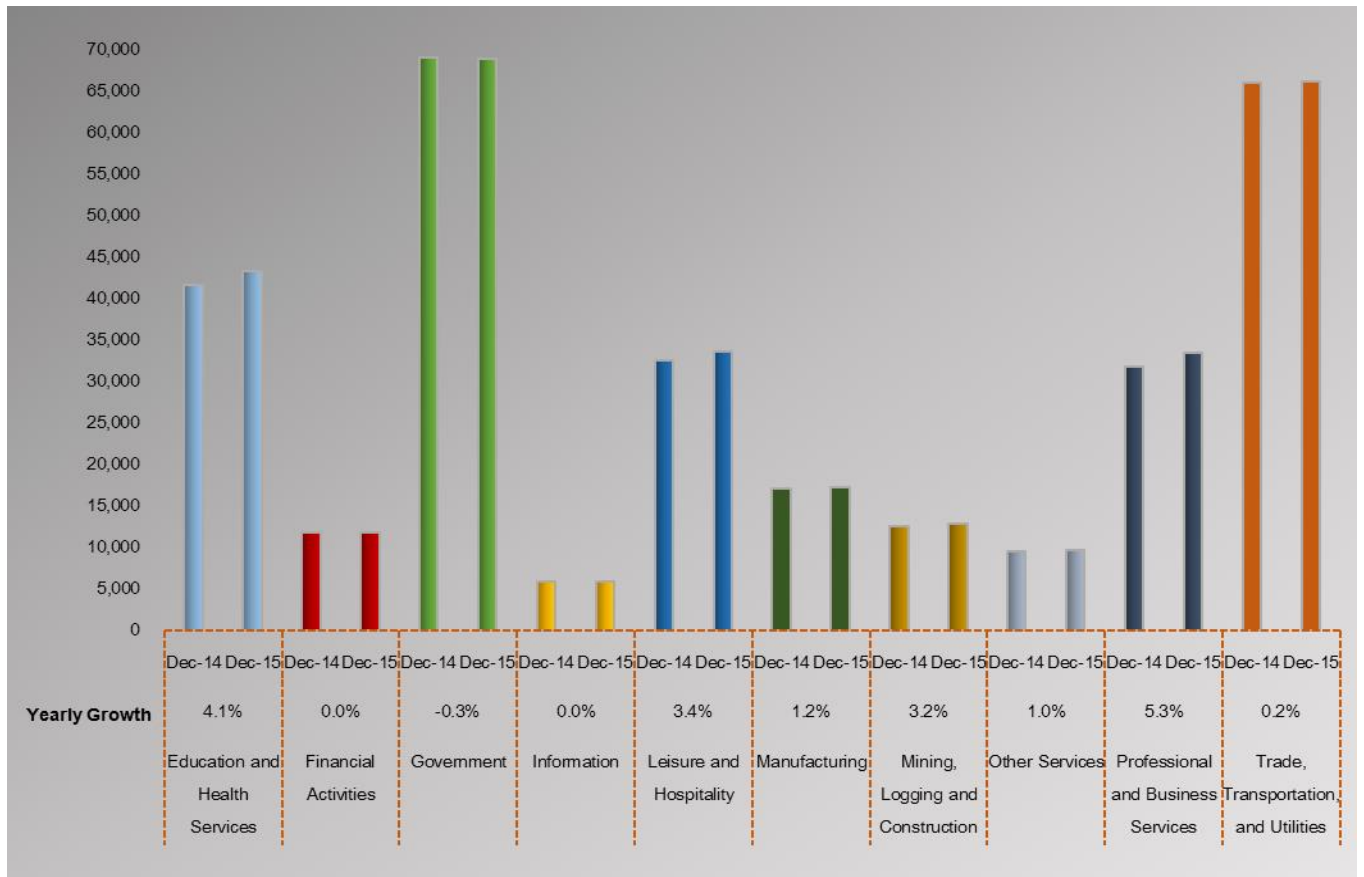
The three Super Sectors with the greatest employment for the El Paso MSA in December 2015 were (1) Government; (2) Trade, Transportation, and Utilities; and (3) Educational and Health Services. These three Super Sectors represented 59% of the total nonfarm employment.

The three Super Sectors with the least employment for the El Paso MSA in December 2015 were (1) Financial Activities; (2) Other Services and (3) Information. These three Super Sectors represented 9% of the total nonfarm employment.



El Paso MSA Employment by Sectors

600 jobs added in December, 5,100 total jobs added over the year



Total Nonagricultural Employment in El Paso MSA expanded by an estimated of 1.7%, (5,100 jobs since last year December 2014).

El Paso MSA Employment by Sectors Year 2015

7 of the 10 industry super sectors experience an increase in employment since last year.

- Education and Services (Employment increased by 1,700 jobs)
- Leisure and Hospitality (Employment increased by 1,100 jobs)
- Manufacturing (Employment increased by 200 jobs)
- Mining, Logging and Construction (Employment increased by 400 jobs)
- Other Services (Employment increased by 100 jobs)
- Professional and Business Services (Employment increased by 1,700 jobs)
- Trade, Transportation and Utilities (Employment decreased by 100 jobs)

One of the 10 industry super sectors experience a decrease in employment since last year.

- Government (Employment decreased by 200 jobs)

Two of the 10 industry super sectors remain static since last year.

- Financial Activities
- Information

Average weekly wages for the Workforce Solutions Borderplex workforce area and the state of Texas

Average Weekly Wage		
Period	Workforce Solutions	
	Borderplex Region	Texas
2nd Quarter 2015	\$672.92	\$988.47
1st Quarter 2015	\$688.97	\$1,088.07
2nd Quarter 2014	\$674.23	\$973.16

Sources:

Texas Labor Market Review, Texas Workforce Commission, December 2015.

Labor Market & Career Information, Texas Workforce Commission, December 2015.

Bureau of Labor Statistics (BLS), December 2015.

To access previous reports, please visit our Workforce Trends and Data section on our website at:

<http://www.borderplexjobs.com/regional-statistics/workforce-trends-and-data>